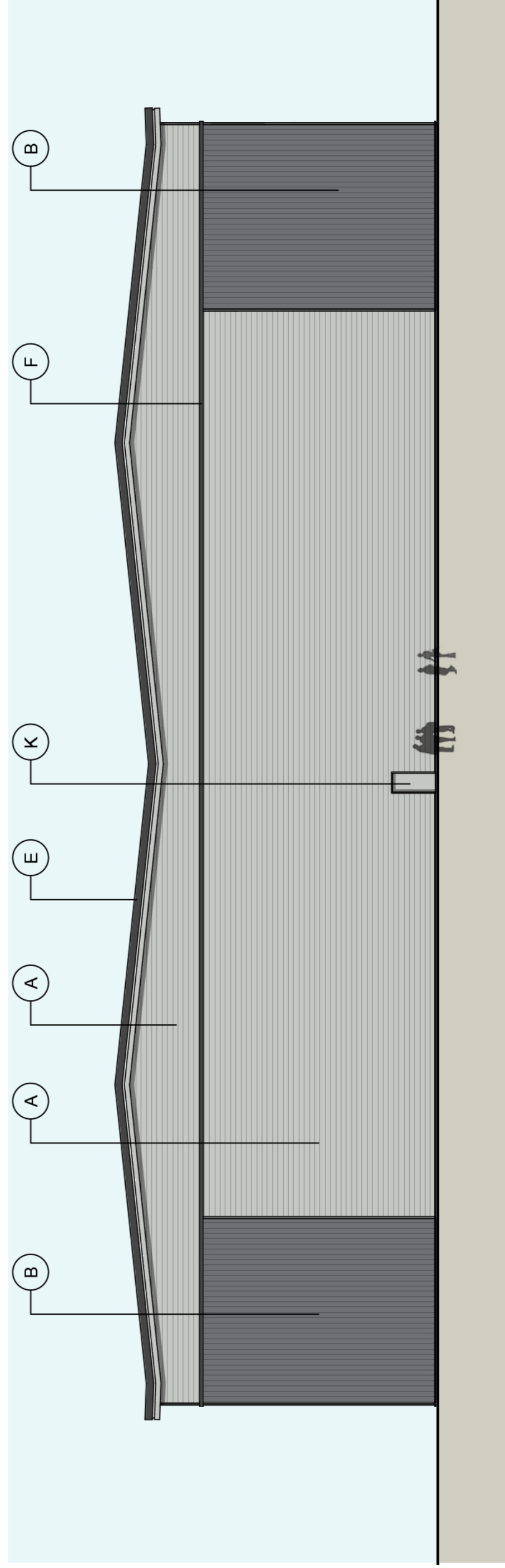
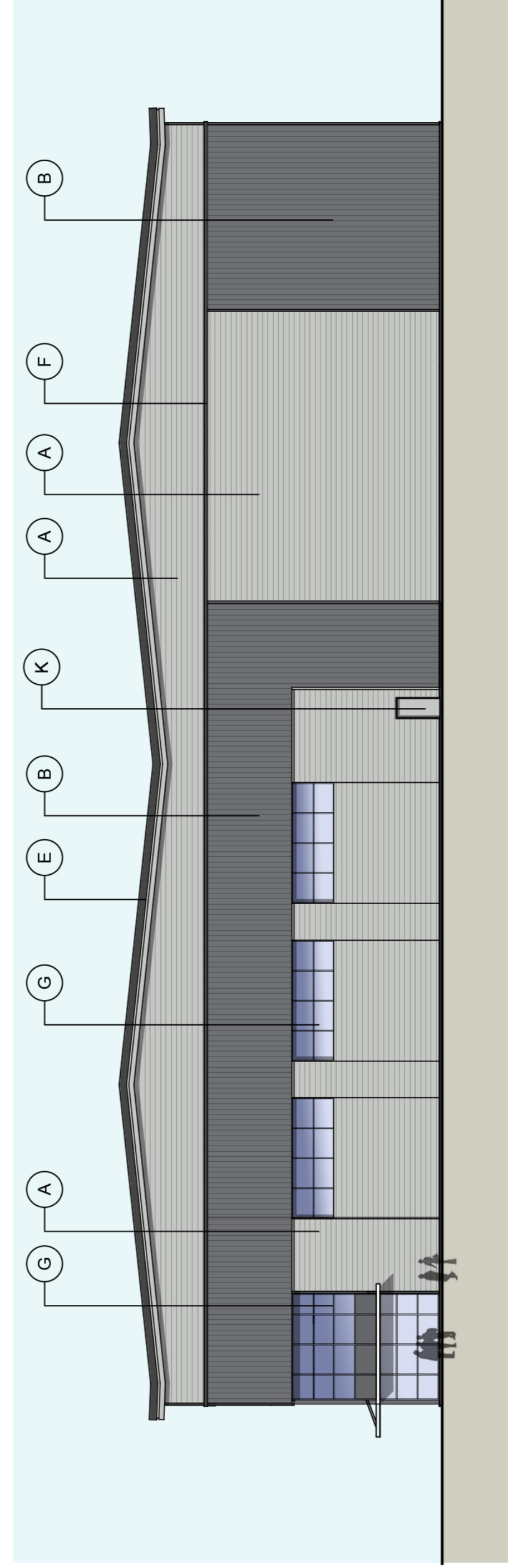
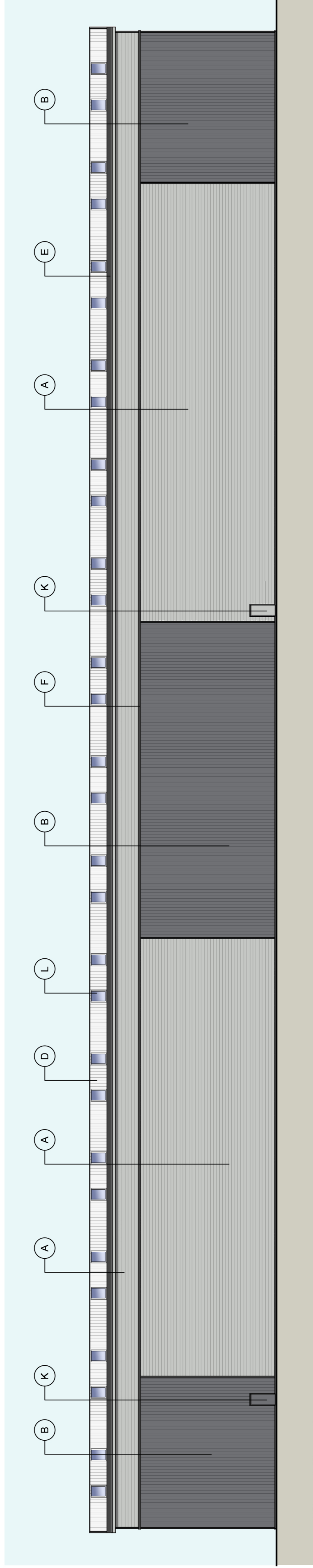
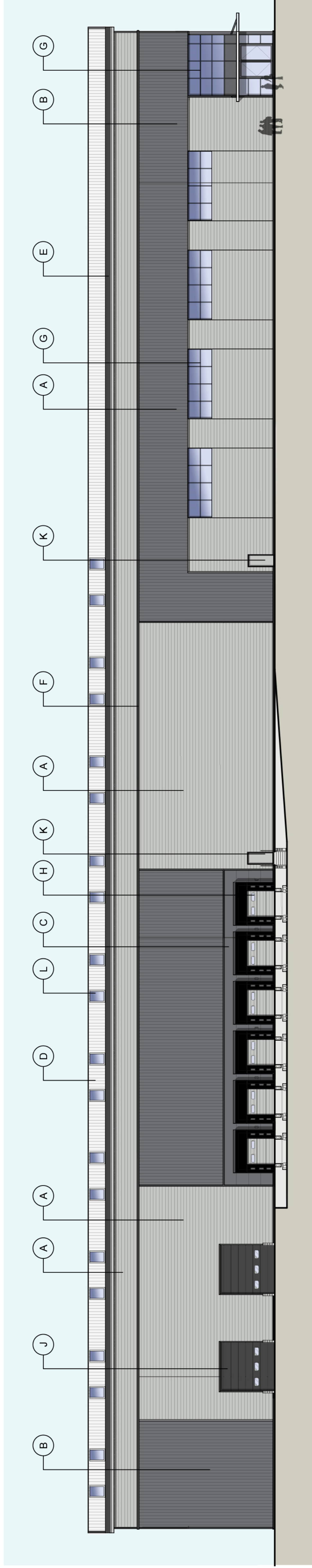
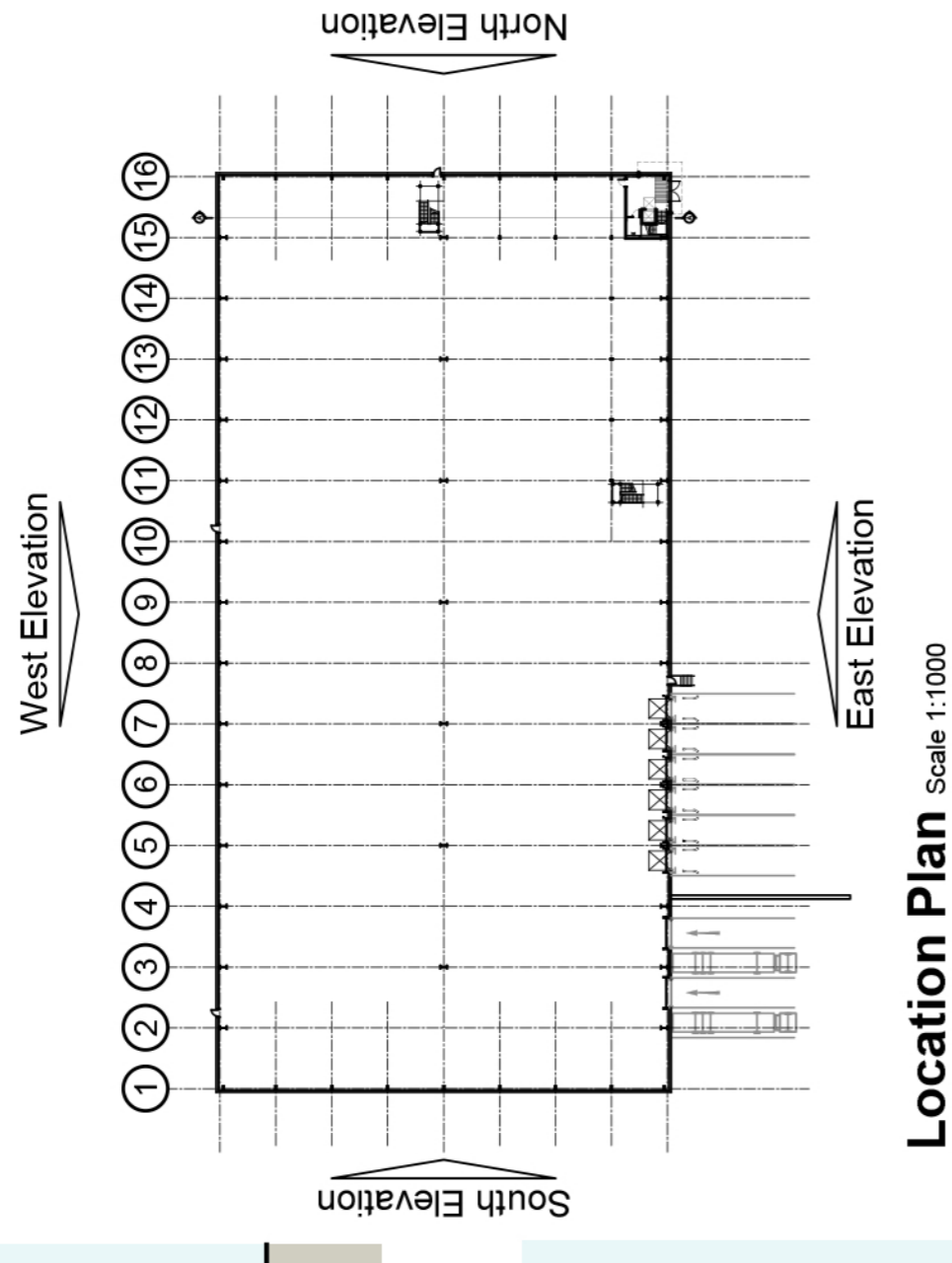
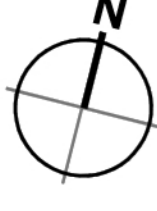


- Dimensions are in millimeters, unless stated otherwise.
 - Scaling of this drawing is not recommended.
 - It is the recipient's responsibility to print this document to the correct scale.
 - All relevant drawings and specifications should be read in conjunction with this drawing.



- A** Horizontally laid trapezoidal profiled wall cladding to achieve a minimum performance 'U' value as stated in Part L (modern building systems guarantee).
Colour: Oyster Grey (RAL 7035)
- B** Vertically laid trapezoidal profiled wall cladding to achieve a minimum performance 'U' value as stated in Part L (modern building systems guarantee).
Colour: Slate Grey (RAL 7032)
- C** 1000mm flat panel cladding system (around docks)
Colour: Slate Grey (RAL 7032)
- D** Reef trapezoidal profiled cladding to achieve a minimum performance 'U' value as stated in Part L model & 25 years system guarantee.
Colour: Gorsewing Grey (RAL 7038)
- E** 2 Piece Eaves flashing
Finish: Polyester Powder Coated
Top Colour: Anthracite (RAL 7016)
Bottom Colour: Oyster Grey (RAL 7035)
- F** High level horizontal feature flashing
Finish: Polyester Powder Coated
Colour: Anthracite Grey (RAL 7016)
- G** Thermally broken polyester powder coated aluminium curtain wall system - mullion drained system
Finish: Polyester Powder Coated
Glazing: Grey tinted
Frame Colour: Anthracite (RAL 7016)
- H** Sectional vertical lift standard HGV dock leveller loading door
Finish: Colourcoat PVF
Colour: Oyster Grey (RAL 7035)
- J** Sectional vertical lift level access loading door
Finish: Colourcoat PVF
Colour: Anthracite (RAL 7016)
- K** Steel insulated security door and frame
Finish: Polyester Powder Coated
Frame Colour: to match adjacent cladding
- L** Rooflights
Triple skin rooflights to 15% of roof area.

rev amendments by dtd date

Alpha Park, Chandlers Ford
 Unit 3 - Proposed Elevations



Newport Business Innovation Centre, Chandlers Ford, Southampton SO43 7FN
 t +44 (0)1703 620027 e info@umcarchitects.com

Drawing Status:	Planning
Drawn:	GDM/GMC
Date:	07/08/2015
Scale:	1:200 A1
Drawing no:	13123 P115
Revision:	P1

